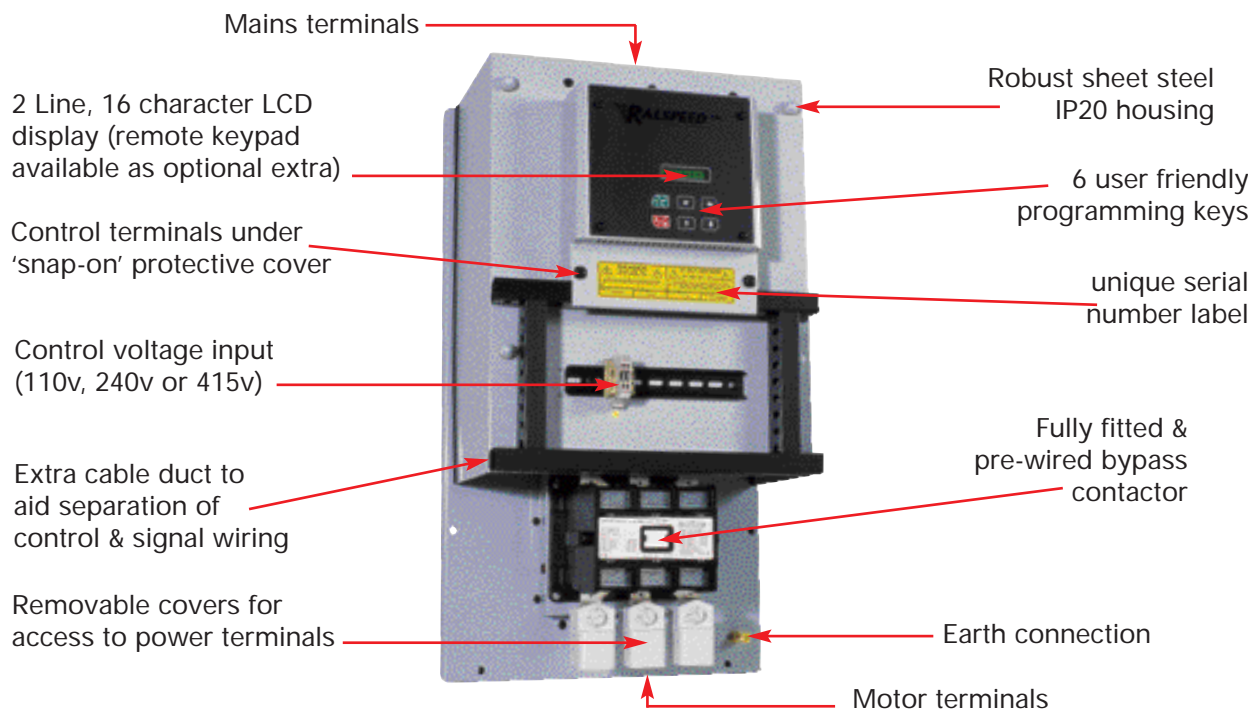


TQM2KB-132 to TQM2KB-250

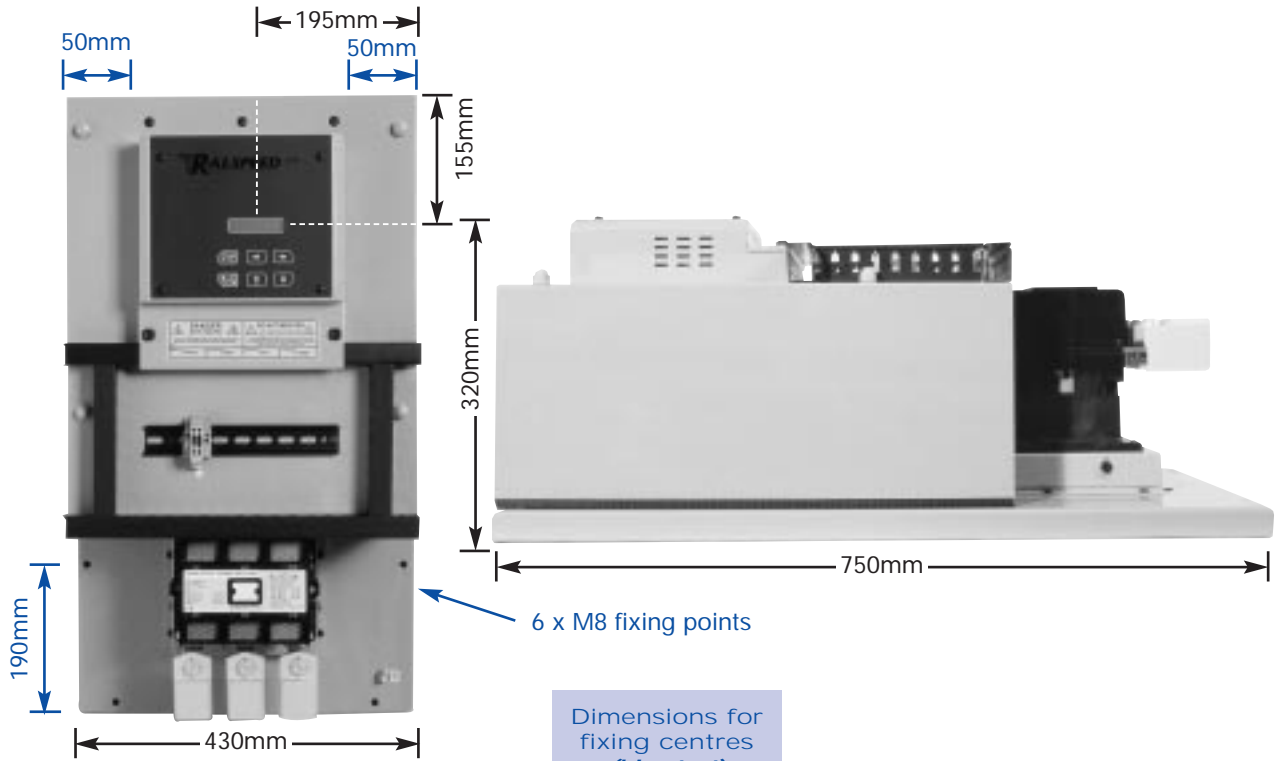
IP20 chassis version soft start unit for bypass duty, contactor to be supplied and fitted by Ralspeed



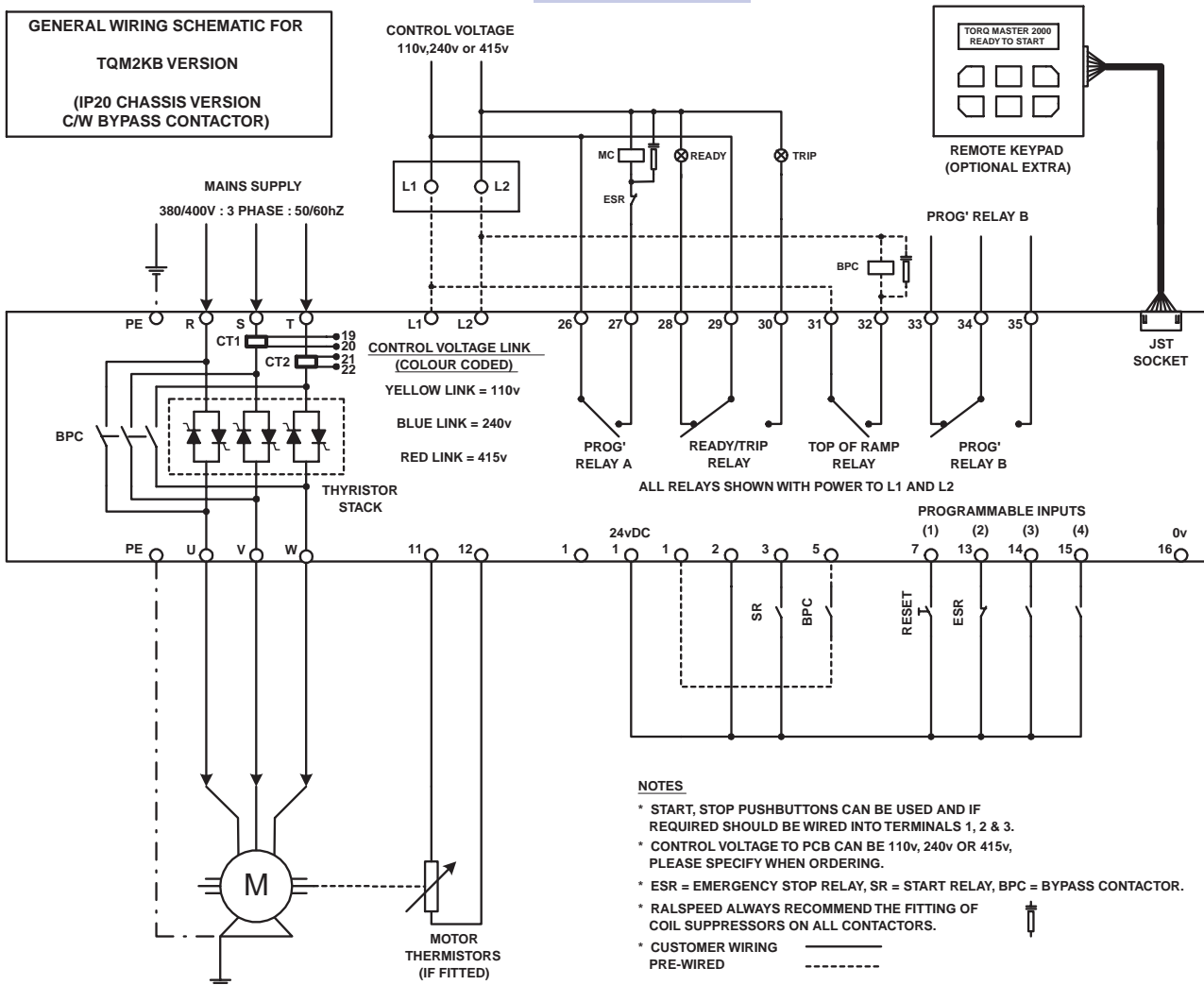
Technical Data	Ratings				
KW rating	132	160	186	225	250
Mains power (R, S, T)	110vAC to 415vAC +10%-10% (690v available as standard option)				
Current rating (Amps) at 380v	245	300	342	408	460
Control supply L1 & L2 (on PCB)	110v / 220v / 440v User selectable and fully fused				
Accel / Decel time – (Voltage ramp)	1 to 240 seconds independently adjustable				
Current limitation details	Max current limit 600% of full load current Ramp to limit 1-10 sec, Current time out 10-60 sec				
Starting torque	25% to 70% of mains voltage – 5% steps				
Stopping torque	25% to 100% of mains voltage – 5% steps				
Torque boost (kick start)	70% of mains voltage adjustable from 200ms to 2sec				
Max switching cycle	12 even starts per hour with override in engineering menu				
Dimensions H x W x D (in mm)	750 x 430 x 320				
Weights Kg (approximately & unpacked)	35	35	35	35	35
Power Terminals - (hole size in sq mm)	10	10	10	10	10
Ambient / Storage temperature	0°C 45°C / -22°C 75°C				
Programmable Relays	Overload, Underload, Thermistor, Service Over, Phase Fault, Firing Fault, External Trip, Overload Pre-alarm, Shearpin, Too many starts, Brake time over & Top of ramp				
Programmable Inputs	Inch, Reset Run Hours, External Trip, Brake Stop, Ramp Hold, Start Delay, Soft Stop, Local/Remote, Em Stop, Reset & Heatsink over Temperature				
Protection	Electronic Overload with 5 Selectable Curves, Underload, Thermistor Trip Circuit, Phase Fault, Thyristor Fault, Overload Pre-Alarm Too many starts, Emergency stop input & electronic "Shearpin"				
Information Screens	Motor Running - Time & Date, Ambient Temperature, Motor Amps (both digital & bar graph), 1000 Event Data-log (Downloadable), Service Interval & Run Hours				

Note: Due to continuous improvement & development, sizes & specification may change without notice - always check with factory before ordering.

TQM2KB-132 to TQM2KB-250



GENERAL WIRING SCHEMATIC FOR TQM2KB VERSION (IP20 CHASSIS VERSION C/W BYPASS CONTACTOR)



Tel: 00 44 (0)1254 582 345 Fax: 00 44 (0)1254 668 414
www.ralspeed.com