

## QUANTIFY ENERGY SAVINGS RELIABLY WITH RALSPEED

**To provide companies with a reliable, accurate and convenient way of analysing their usage of electrical energy, and to quantify the savings made by introducing energy efficiency measures, we are now offering sophisticated portable energy recorders for short-term hire at very competitive rates.**

The data can then be analysed and graphed using Propower software, which is supplied as part of the hire package, to reveal, for example, total kWh used over period, the time and duration of peak energy usage and a whole range of additional information that helps to identify the areas that offer the best opportunities for implementing energy saving measures.

“Our new hire service provides companies with a very inexpensive way of gaining a detailed understanding of their energy usage,” said Ralspeed Managing Director, “which is the key to maximising energy savings. In addition, the Profiler can also be used after energy saving measures have been put in place to confirm their effectiveness. In short, the Profiler takes the guesswork out of optimising energy efficiency.”

To ensure that it is safe and easy to use, the Profiler energy recorder uses innovative technology that avoids the need to make electrical connections to the circuits being monitored. The unit senses voltage via an ordinary

13 A plug that can be plugged into any convenient socket, while for current sensing it uses three flexible open-ended coils, which the user simply wraps around the phase conductors for the circuit under test. This arrangement means that the disturbance to the electrical installation is minimal, and the risk of electric shock is eliminated.

Ralspeed complements its energy recorder hire service with comprehensive technical support and advice. The company is happy to provide guidance on the best locations to install the recorder and to advise on the interpretation of the results. On the basis of those results, it can also suggest effective energy saving measures and, in many instances, supply the equipment needed to achieve those savings.



### SYSTEM/SPECIFICATION

**Profile** unit 95 x 195 x 45 mm with integral LCD, weight 0.5 kg  
Integration period user selectable 30, 15, 10, 5, 1 mins or 10, 2 secs

**Data storage** 30 mins : 12 weeks, 15 mins : 6 weeks etc

**Profile IV** auto ranges to 6, 120, 500 & 2000 Amps

**Profile V** as IV plus with auto HV facility

3 flexible Rogowski coils, internal capacity ~Ø 50mm, 0-2000 Amps range LV power lead [standard 13 Amp plug], unit will operate 95V to 265V RS232 data transfer lead.

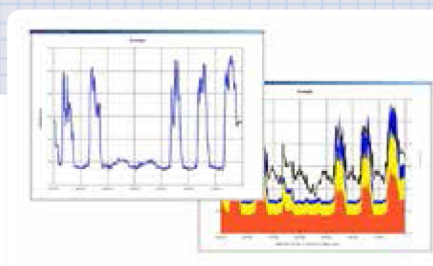
Carry case, User Manual and installation guide.

**Propower PP2** (latest version) Software with User Guide

**Options** available include pulse input adaptor and fused mains lead/probes for switchgear use.

An additional software package, **Reporter Professional**, provides further data analysis including tariff costing of the data recorded and other graphical outputs.

Data can also be retrieved over a site network thus enabling the monitoring of remote locations from a central PC.



Graphs showing results of energy tests